

SASS Policy Memo

To: SASS Members and Contest Directors

From: SASS Board of Directors

CC: Dave Friant

Date: 7/20/2012

Re: Seattle Area Soaring Society (SASS) Camp Korey Camping Policy – Release 2.0

PRE-REQUISITES for CAMPING

- This policy applies to all current paid SASS members and their sponsored guests.
- All non-SASS Members are considered guests and are required to have a SASS member sponsor them and be present at all times while on Camp Korey property. SASS Members are responsible for their guest's actions and must ensure their guests comply with this camping policy.
- SASS guests must read the Camp Korey flying rules before using the facilities. A copy of the flying rules can be found on the SASS website.
- All campers must notify the SASS Event CD before camping. Send an email or telephone the event CD to notify SASS of your camping plans before you arrive to camp. If the CD is not available the alternate contact is the SASS Treasurer, which is Larry Eich, (l.eich@frontier.com, 425-772-2701)
 - You must notify the CD of any camping guests you plan to sponsor.
 - The event CD or SASS Treasurer will inform campers of any special rules in effect for their specific camping dates.

CAMPING RULES

- Alcohol is not allowed on the premises of Camp Korey.
- Kitchen facilities in the Cattery building are not allowed to be used.
- Sleeping in the Cattery building is not allowed.
- SASS will allow one camp fire each night to be shared between the campers. SASS will provide one removable fire pit. All fires are to be kept at a low volume. Campers must bring their own wood. There will be no fire wood collecting on Camp Korey property or adjoining properties. Campers must remove the ashes and return the fire pit to SASS storage.
- Do not burn garbage in the fire pit.
- Fire should be placed a reasonable distance from all tents, cars, structures, and SASS equipment.
- Fires are only allowed in designated camping areas.
- Driving on the field is not allowed when the field is wet and unstable. Use good judgment.
- Limit in and out privileges to Camp Korey to a minimum.
- Do not leave any garbage behind. Do not place garbage in Camp Korey garbage containers. Take all items and garbage out that you bring in, including firewood.
- Use of the restroom in the Cattery building is allowed and everyone is required to clean up after themselves. SASS does not provide cleaning services.
- Campers can sleep in RV's and other vehicles, tents, or under the stars.

- Approved camp site areas are shown in the attached photographs. The event CD or the SASS camp host will specify which of the approved camp site area(s) to setup camp.
- During one-day contests campers may be asked to remove camping equipment by the SASS event CD or a SASS member if it interferes with a contest or fun flying the day before or after a SASS event.
- Do not loiter around the Cattery or residential buildings as they may be occupied by Camp Korey Campers.
- If you see Camp Korey Camps please avoid any contact unless approached by Camp Korey officials.
- SASS Camping is limited to the night before an event or the night after an event, or both.
- Any issues or questions surrounding camping logistics that arise during camping hours from dusk to dawn are to be discussed with the CD, or a SASS member if a CD is not onsite during camping hours.
- During contest setup and during a contest all decisions regarding the logistics of where camps are located or where cars and vehicles are parked is at the discretion of the CD to make final decisions.
- All campers must comply with decisions of the CD.
- Keep noise to a minimum. No loud music or loud voices.

SPECIAL NOTES:

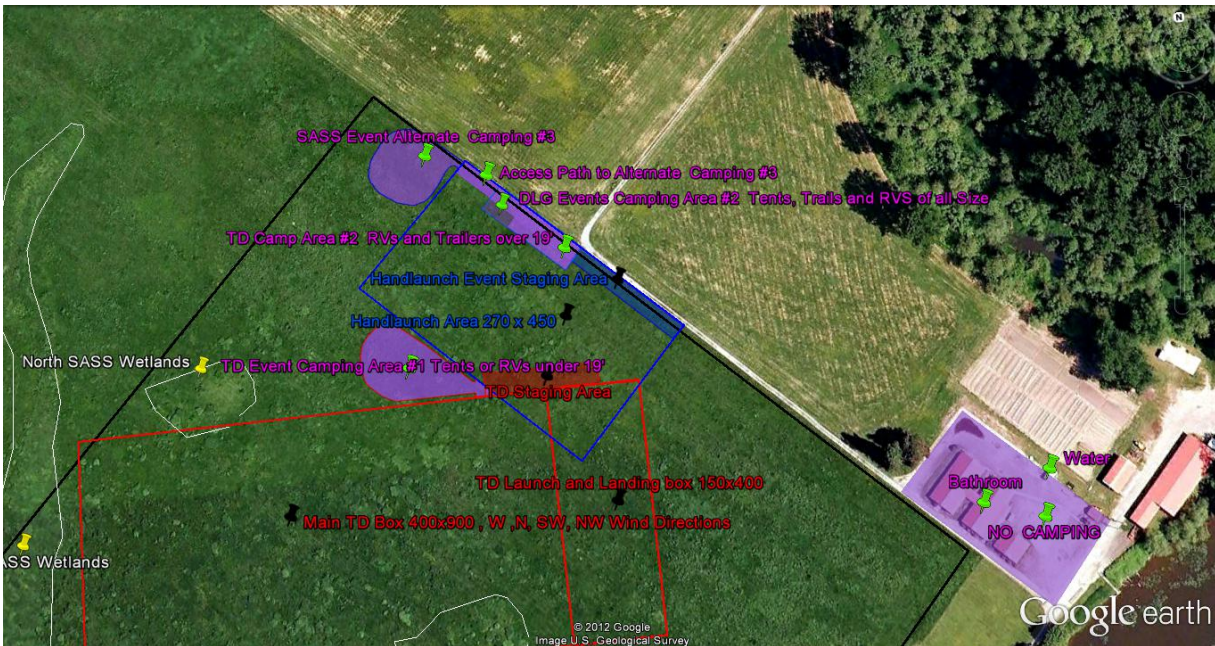
Camping on Camp Korey property for SASS events is currently in a test phase as of May 2012 and can be discontinued by the Board of Directors at any time for any reason.

The rules outlined in this policy document are to be complied with in their entirety. The SASS Board of Directors can, at their discretion, make revisions to this document at any time.

The SASS Board of Directors can, at their discretion, approve or disapprove anyone person or groups of people from camping on the Camp Korey facilities at any time for any reason.

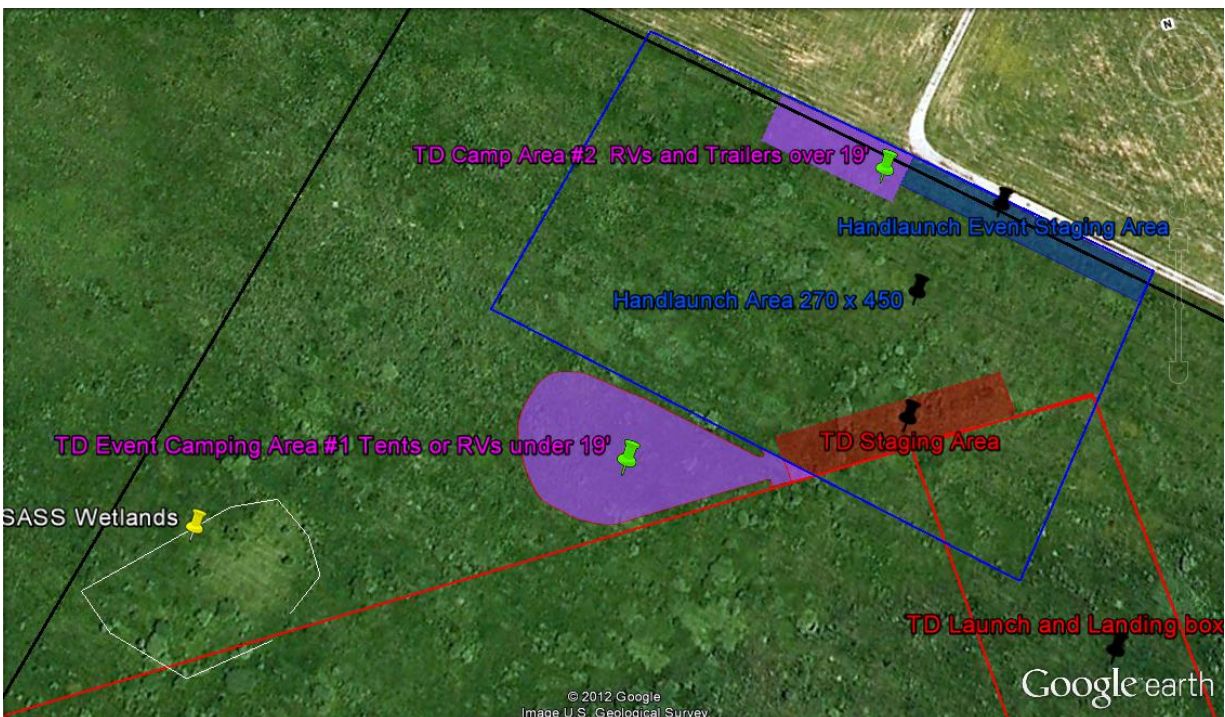
CAMP KOREY OVERNIGHT CAMPING LOCATIONS

Overview of the camping areas with bathroom and fresh water resources identified.



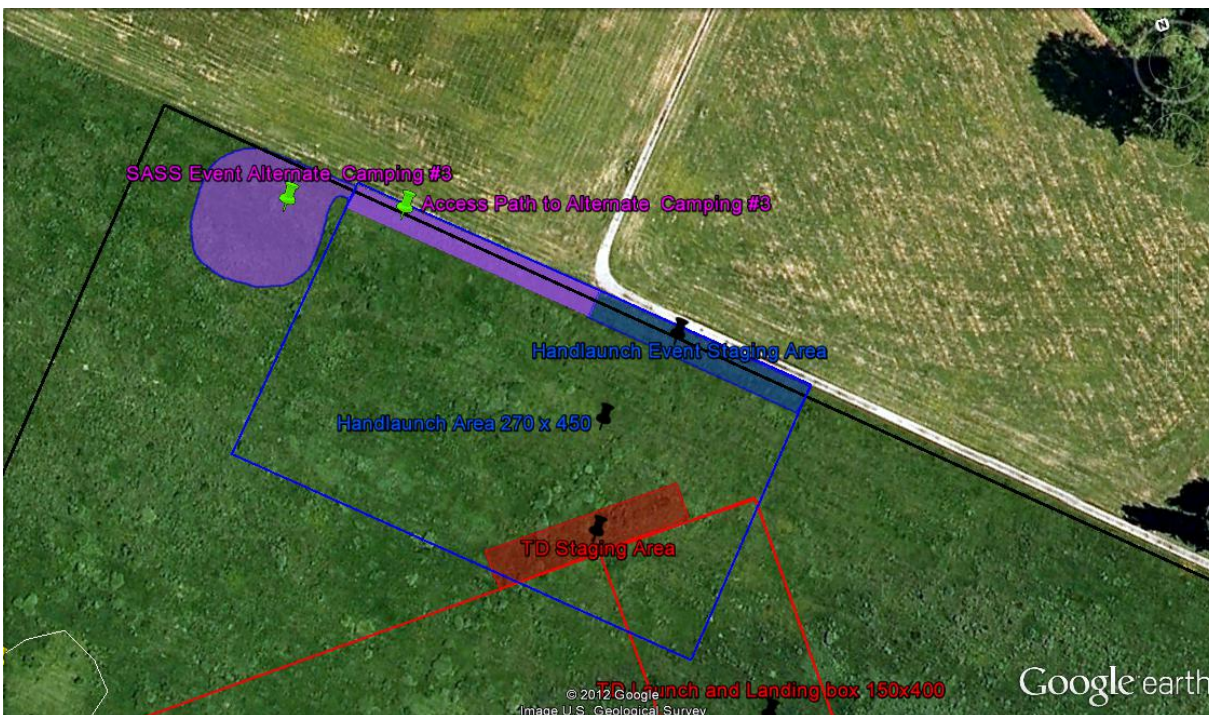
The map above shows the SASS approved camping areas on the field highlighted in purple. Please note the camping and parking areas for RVs under 19' and RVs over 19' are located in separate areas on the field.

Enlarged view of camp sites 1 and 2.



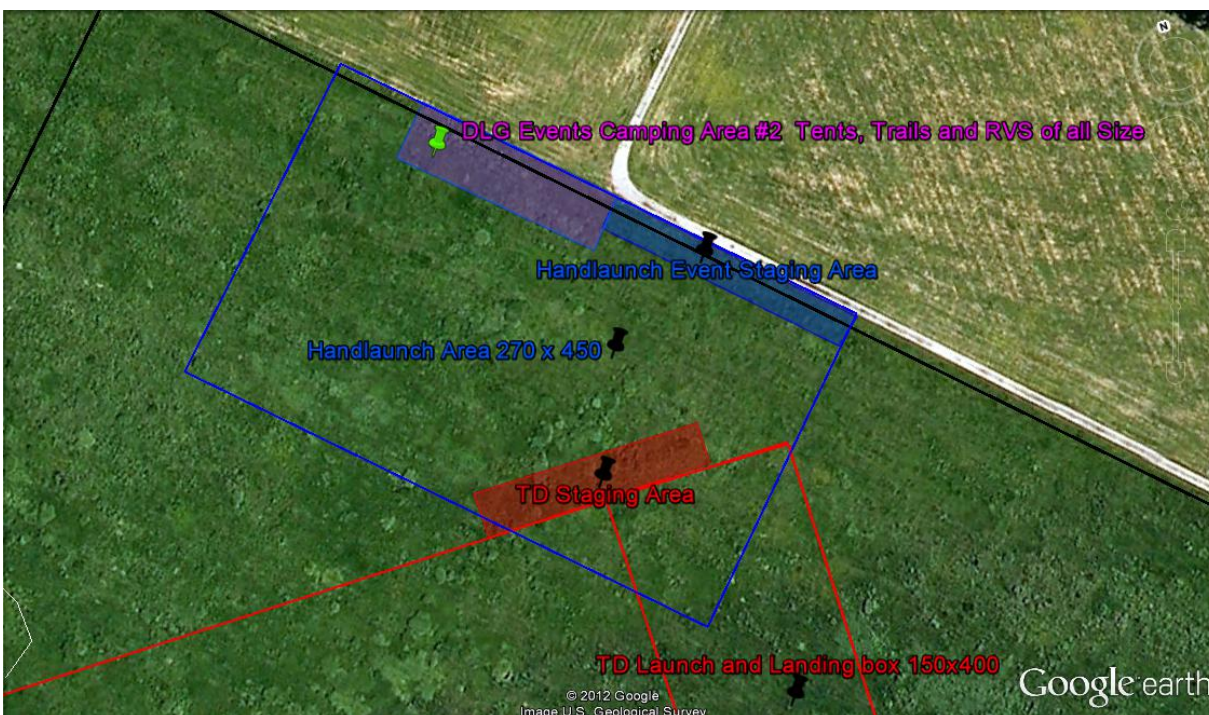
NOTE: The use of camp sites 1 and 2 are the SASS approved camp sites. No one is allowed to camp in any other location on the property that is leased by SASS unless directed by the CD.

Enlarged view of alternate camp site 3.



NOTE: The use of alternate camp site 3 is at the discretion of the CD.

Enlarged view of DLG event camp site.



The following map shows the location of the bathroom facilities inside the Cattery building and the fresh water location outside.



Revision History:

- Release 2 incorporates changes required by Camp Korey management.
 - RVs cannot be parked near the Cattery building. All RV parking is to be located in the designated areas on the field shown in the images above.